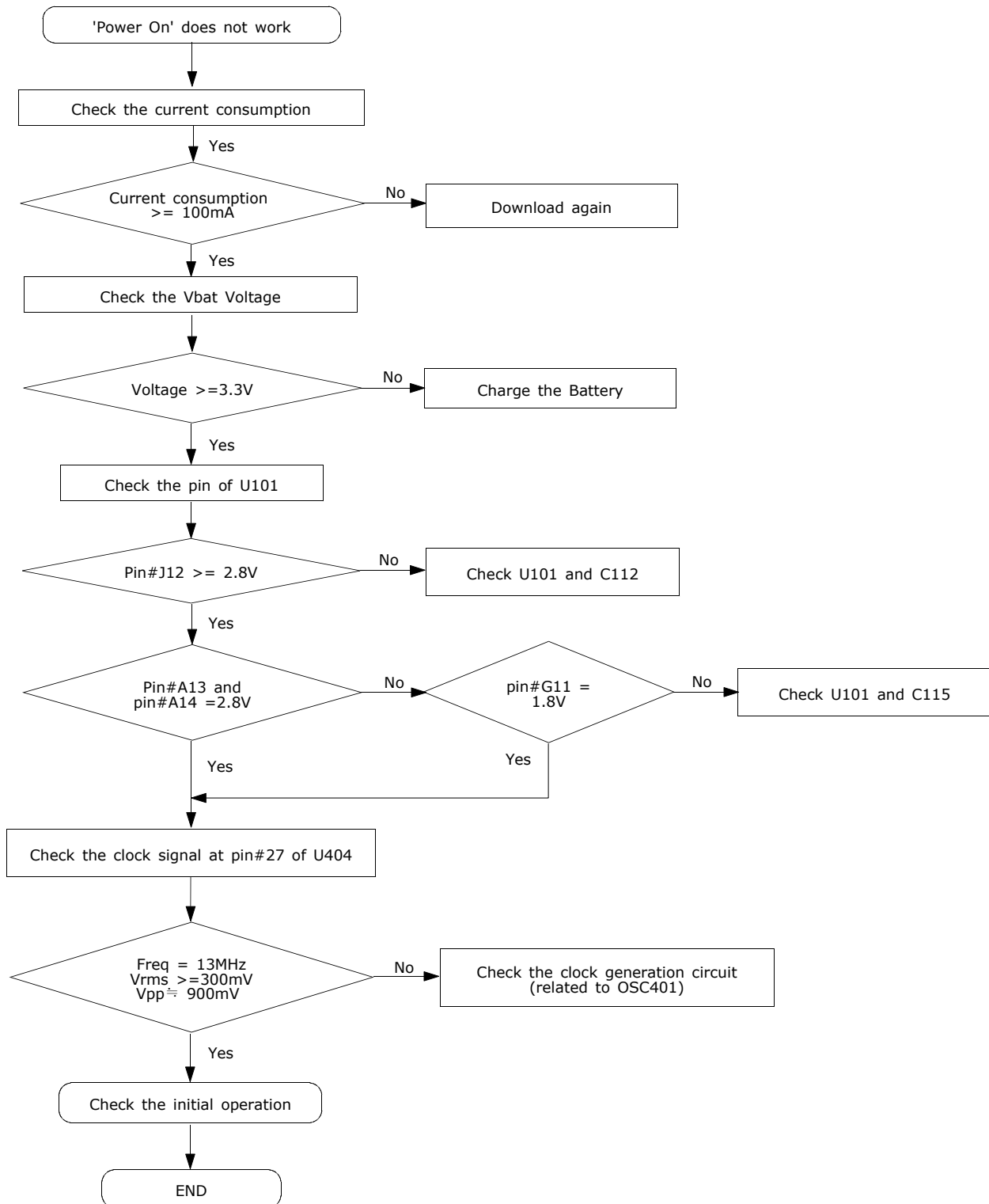


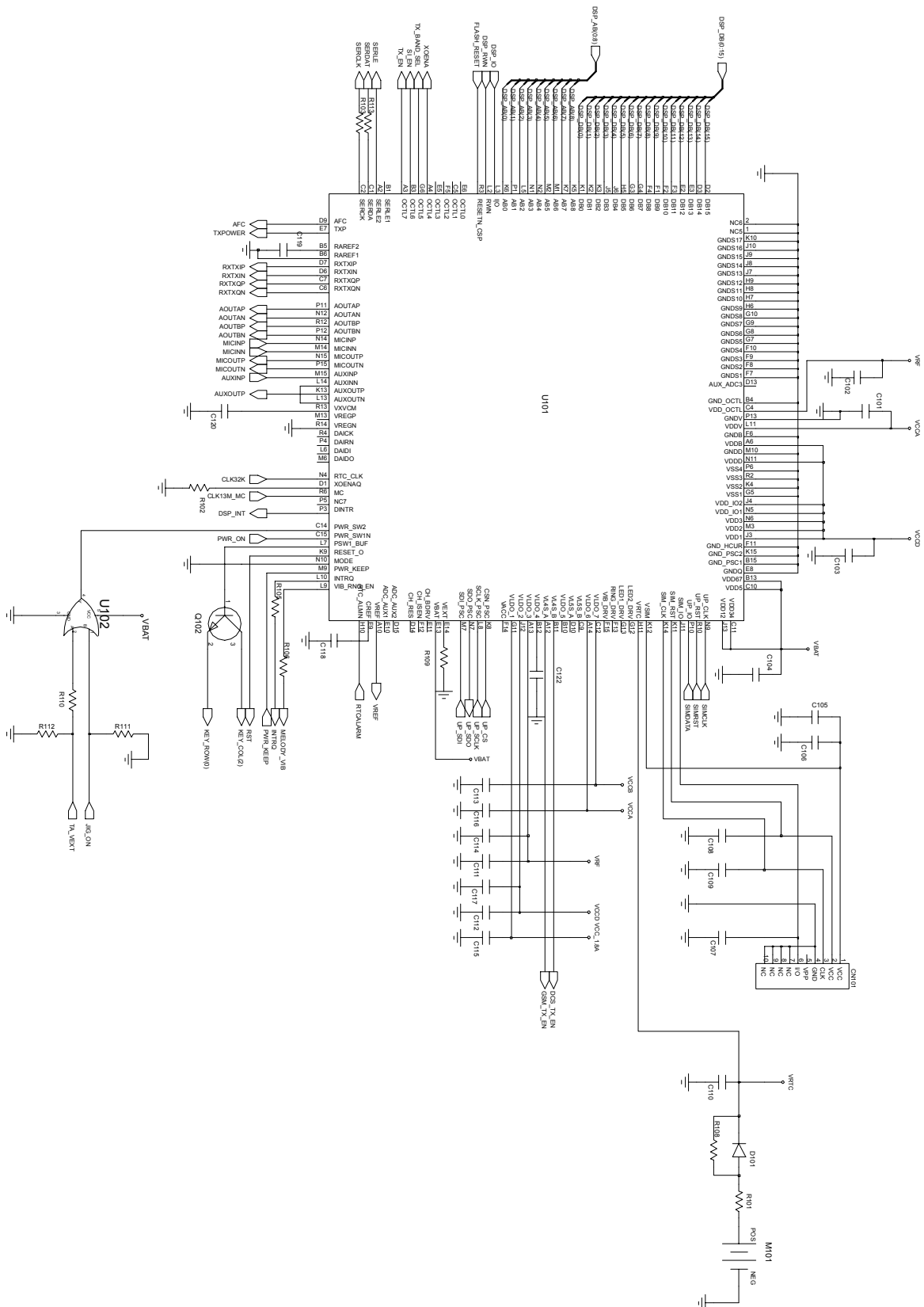
2. SGH-X140 Flow Chart of Troubleshooting

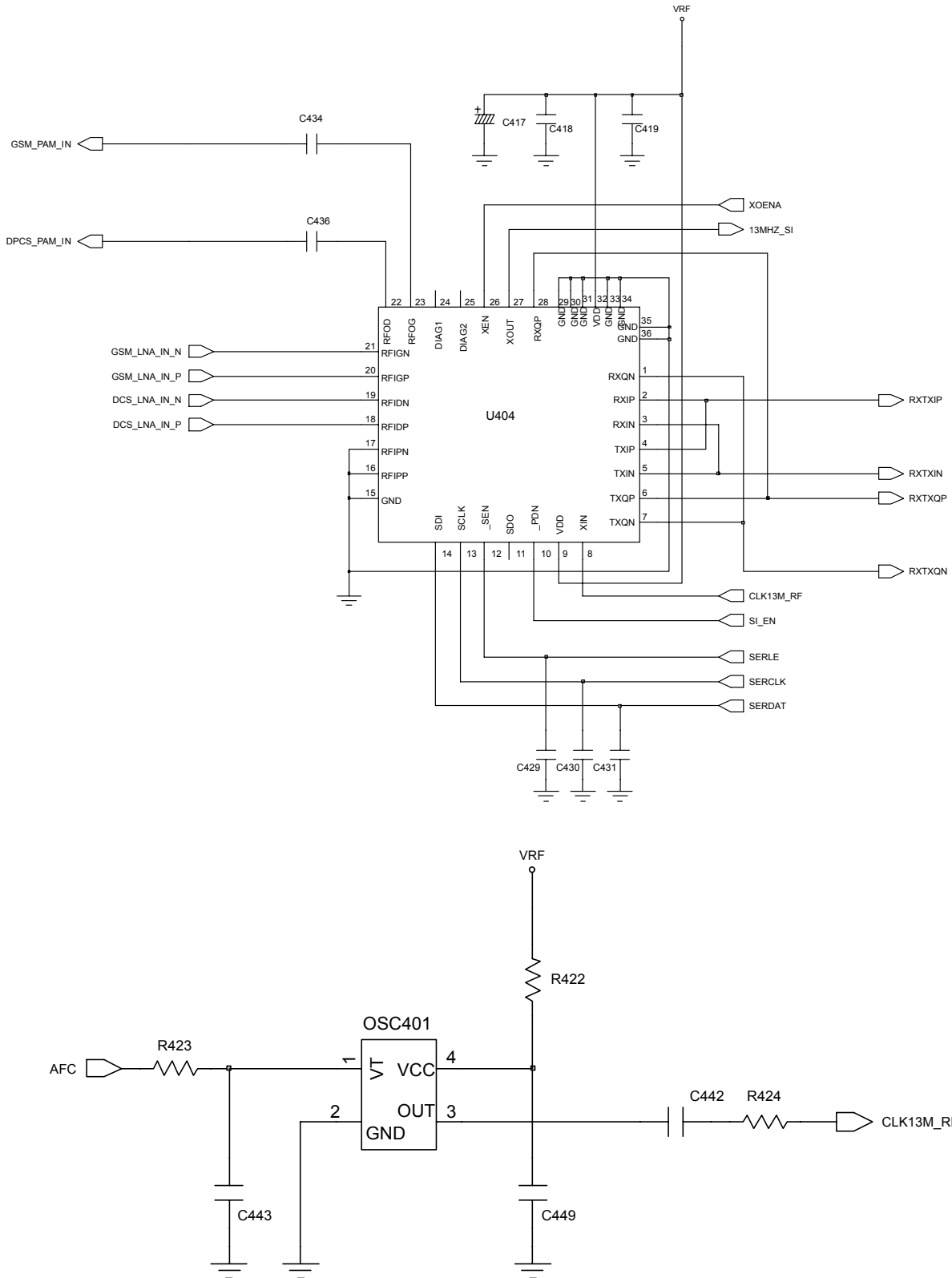
2-1.Baseband

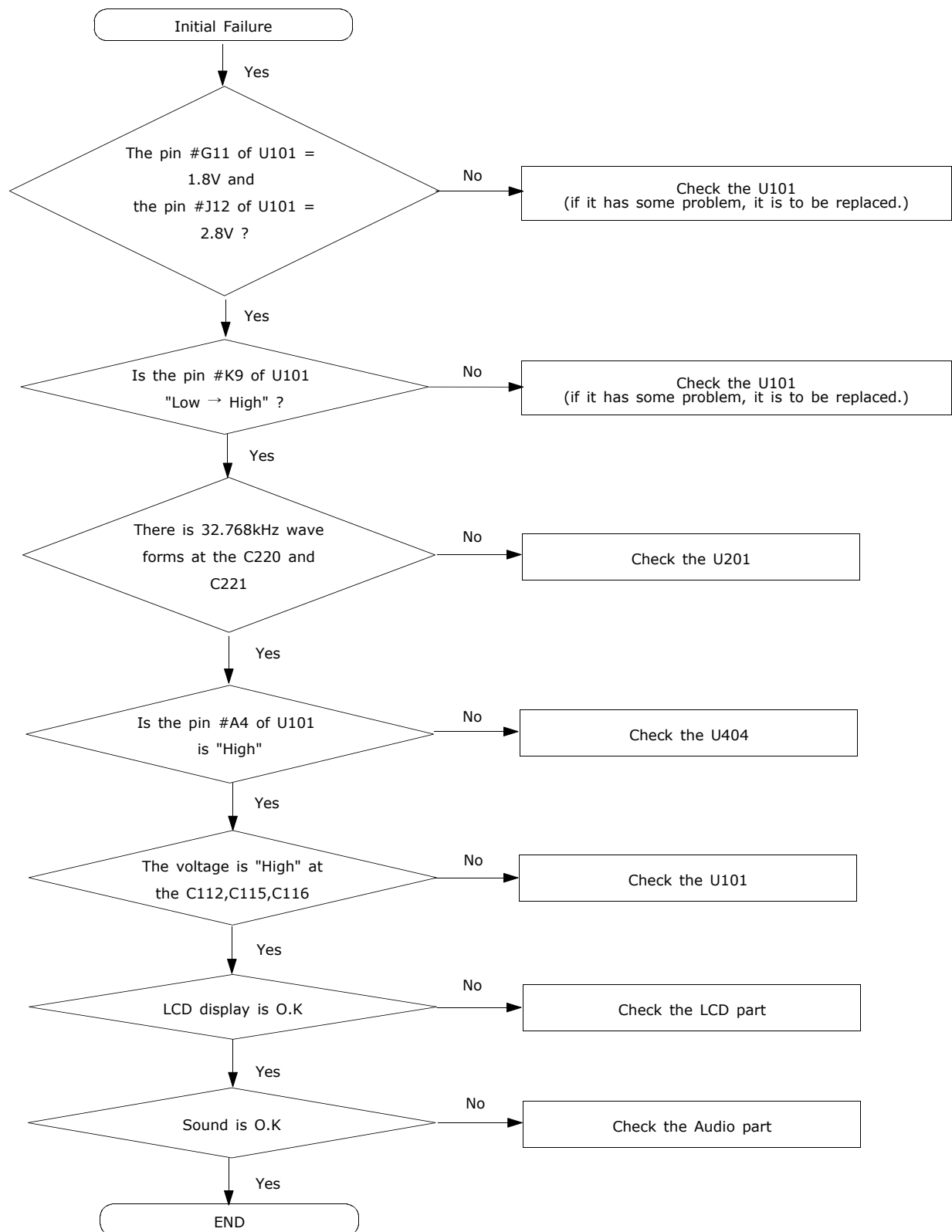
2-1-1. Power ON

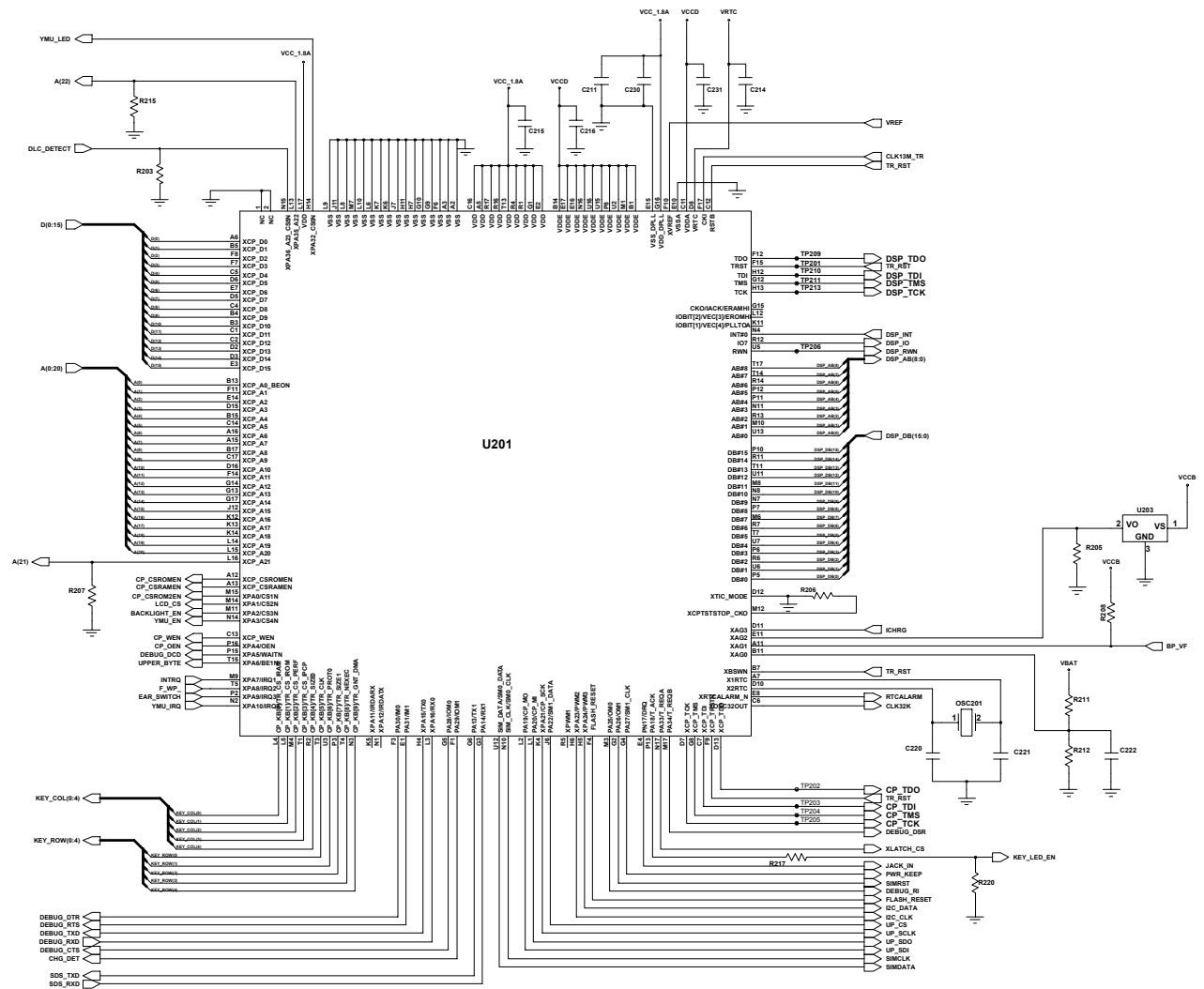


SGH-X140 Flow Chart of Troubleshooting

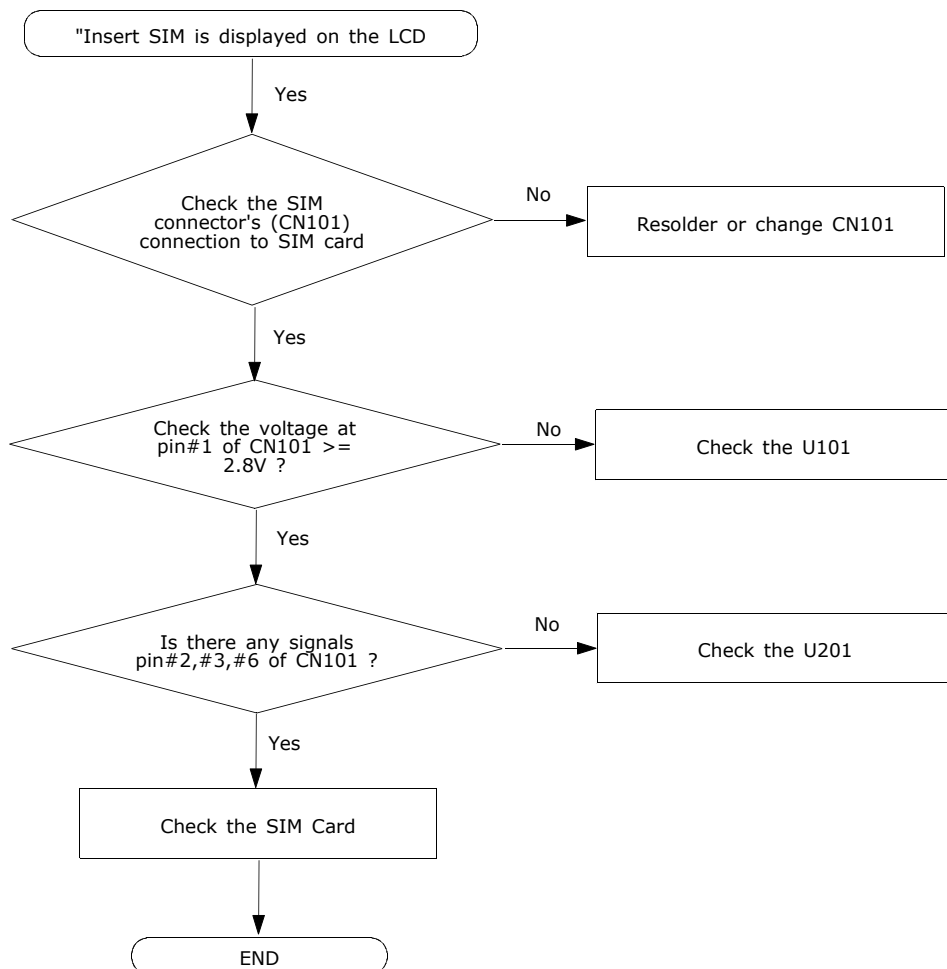




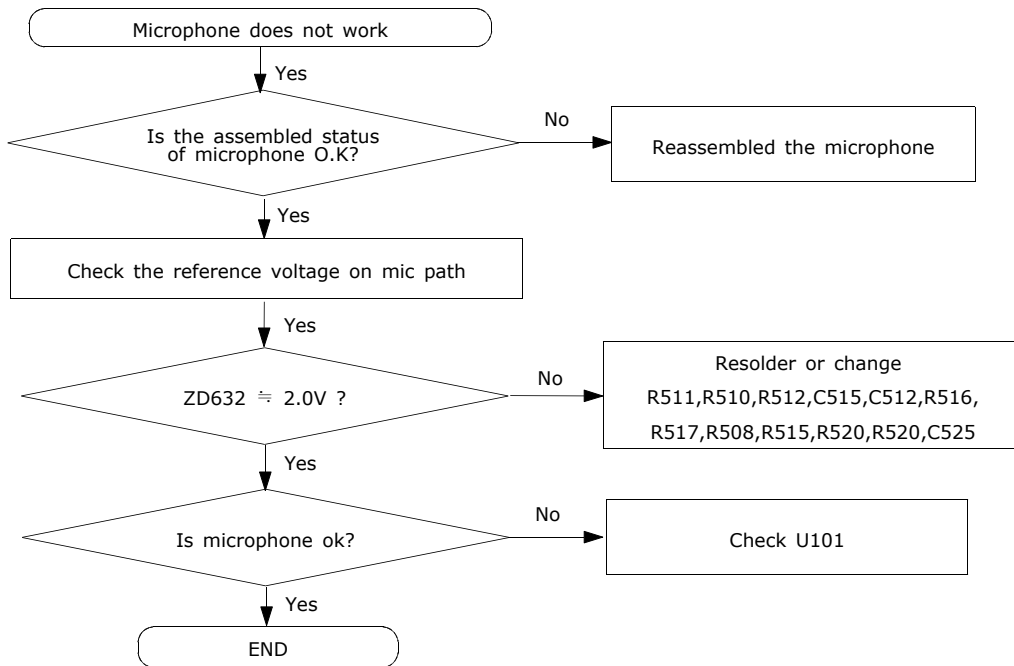
2-1-2. Initial



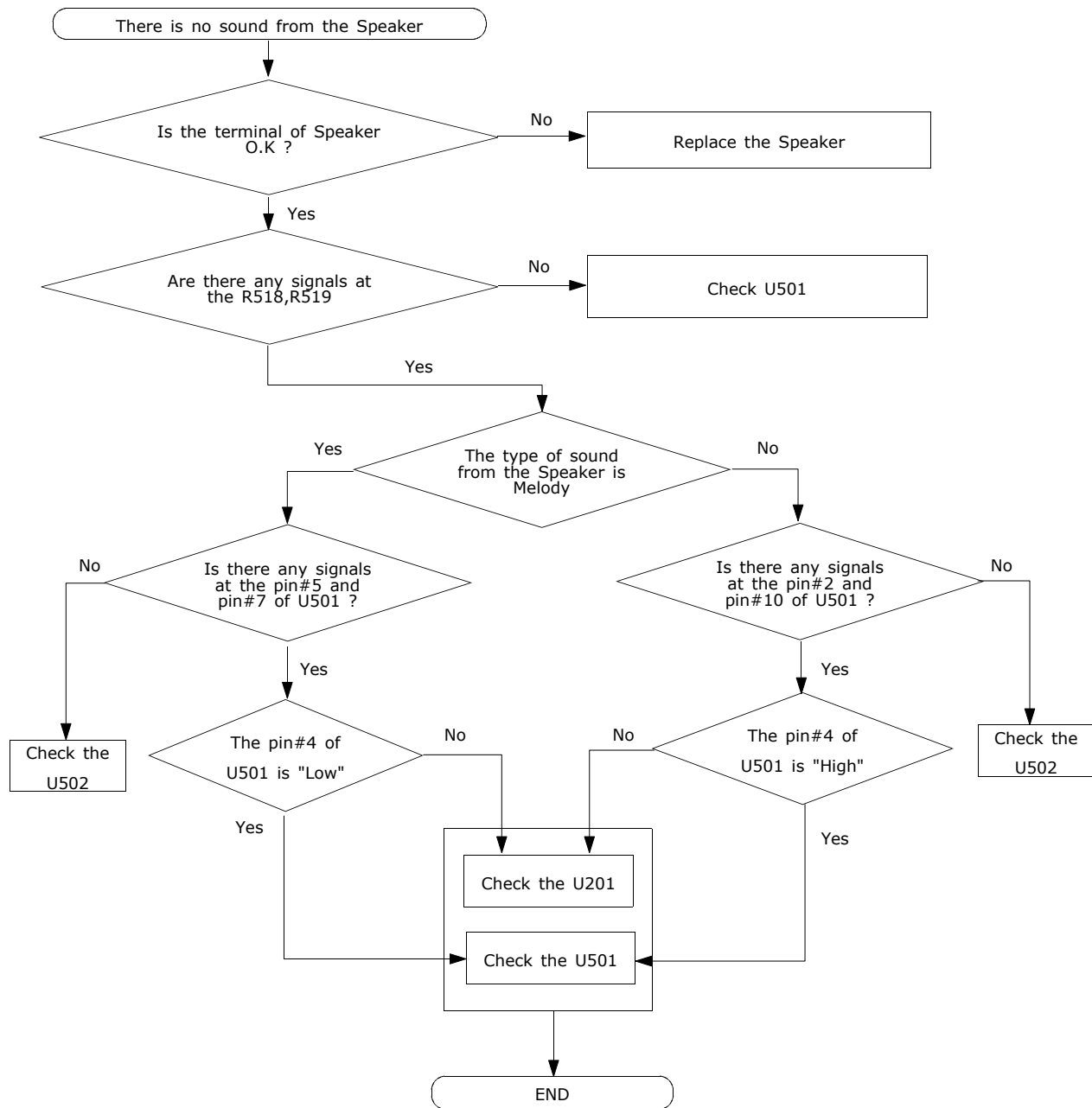
2-1-3. Sim Part

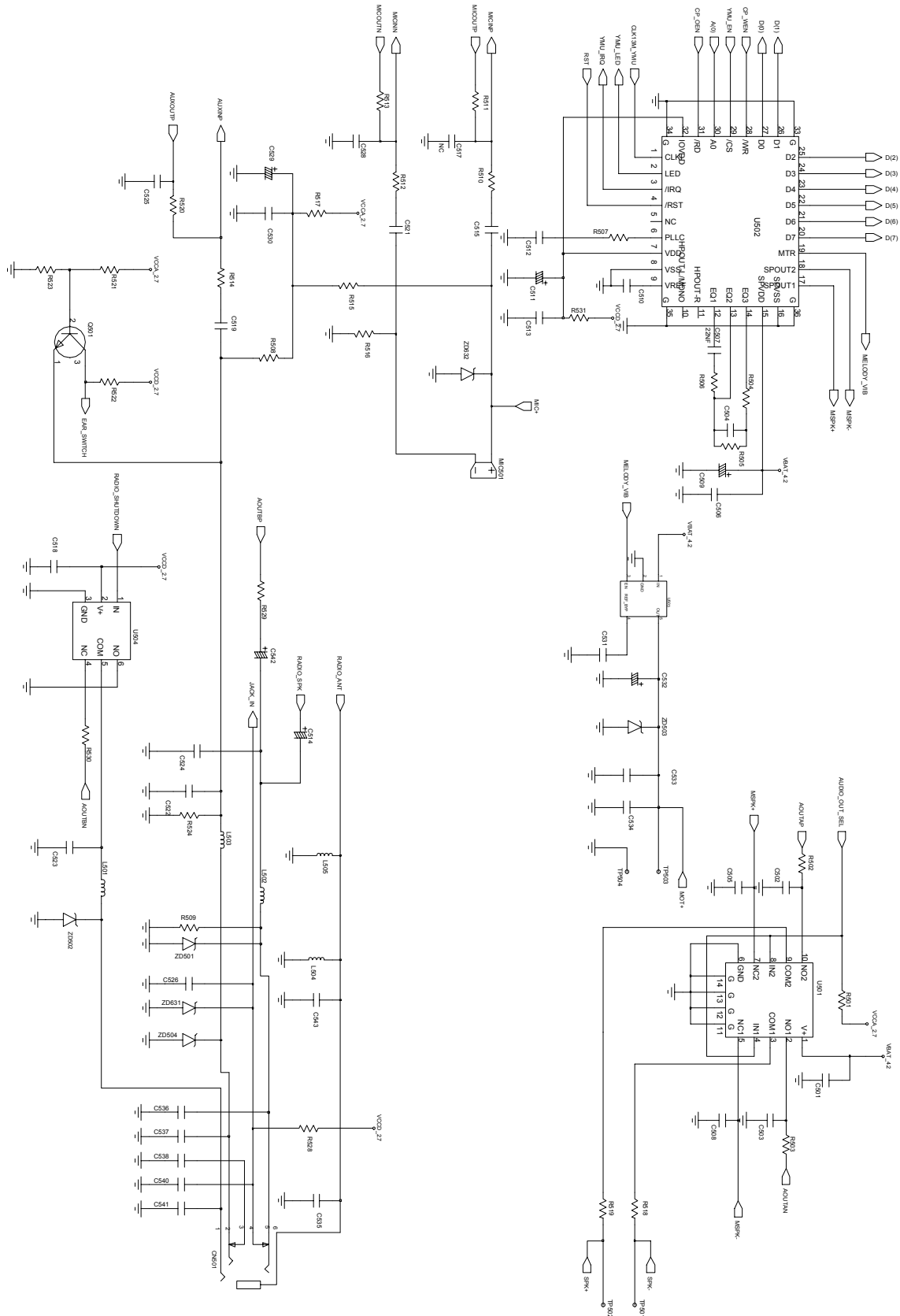


2-1-4. Microphone Part



2-1-5. Speaker Part

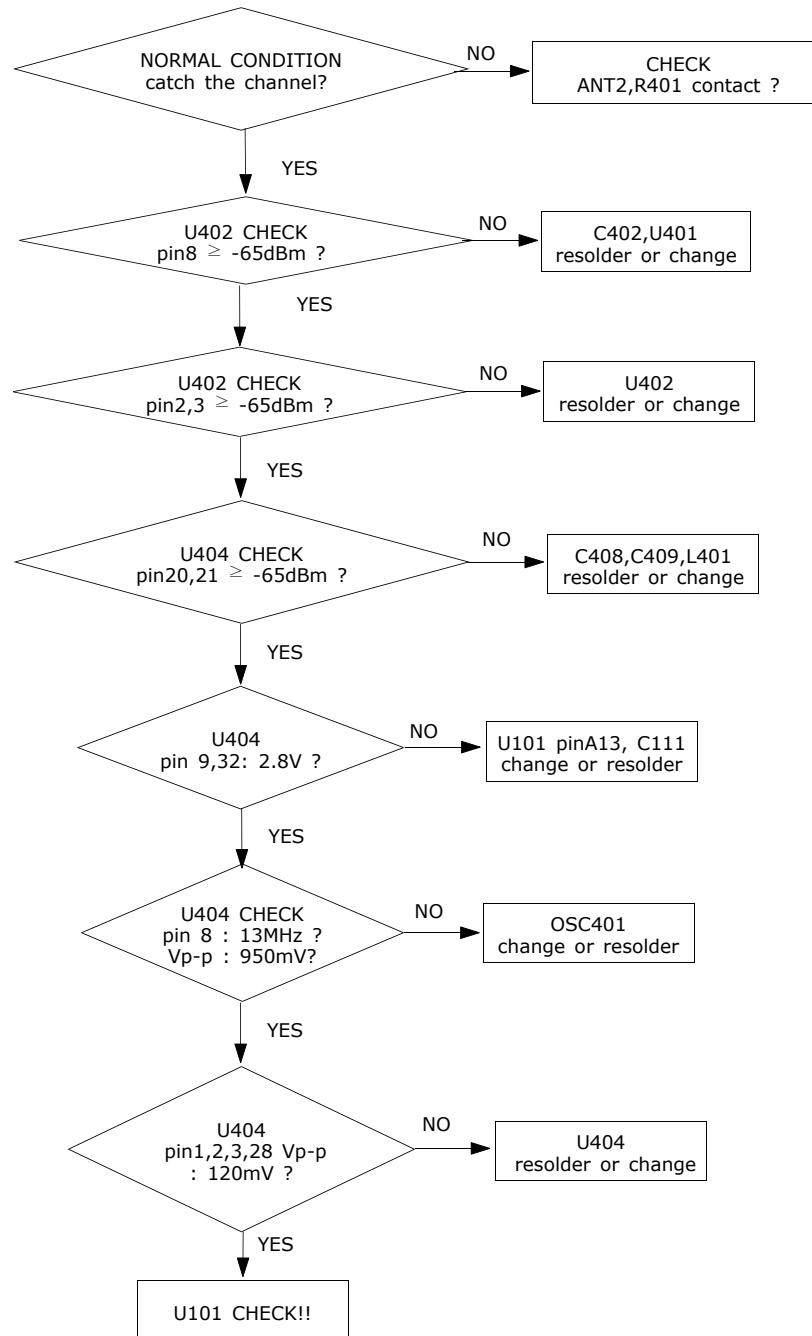




2-2.RF

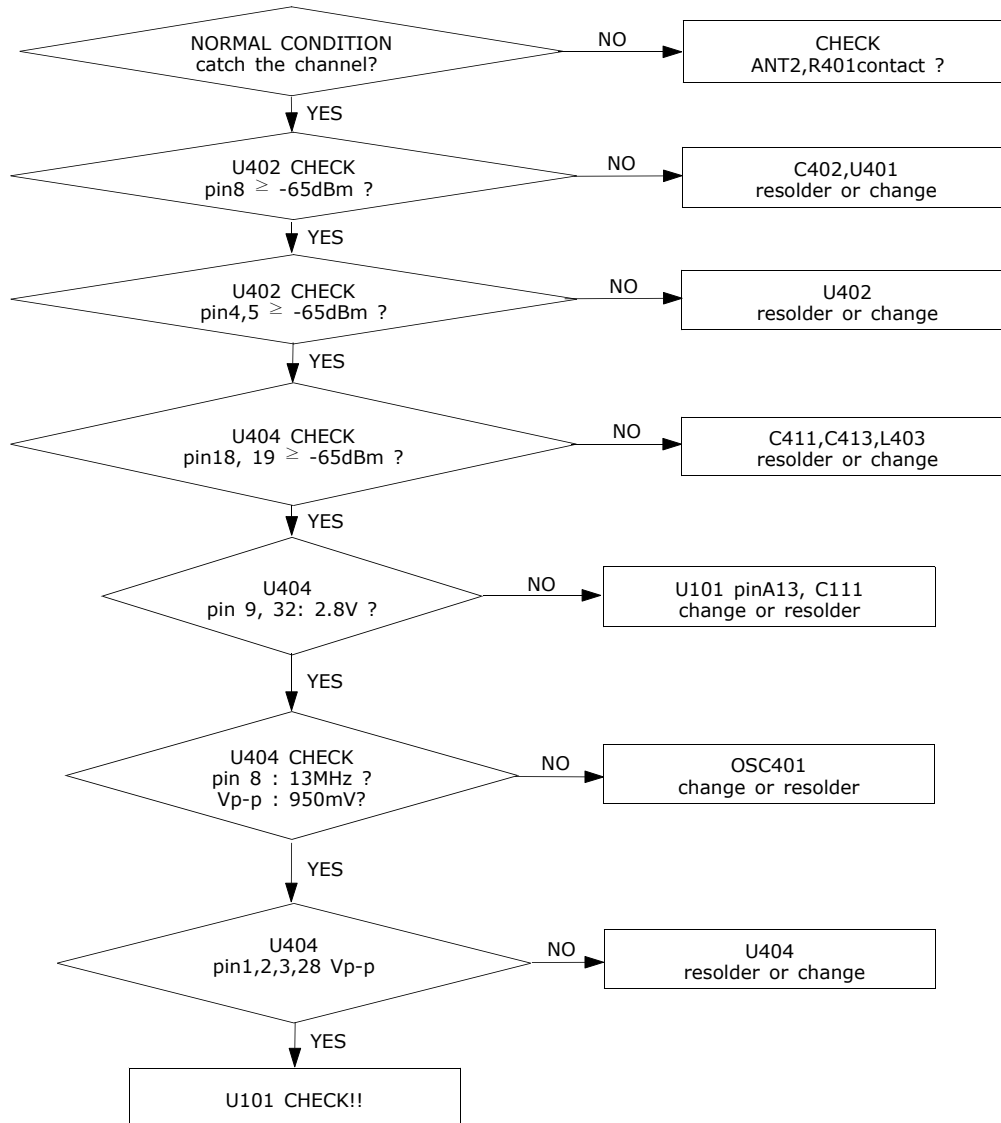
2-2-1. EGSM RX

CONTINUOUS RX ON
RF INPUT : 62CH
AMP : -50dBm

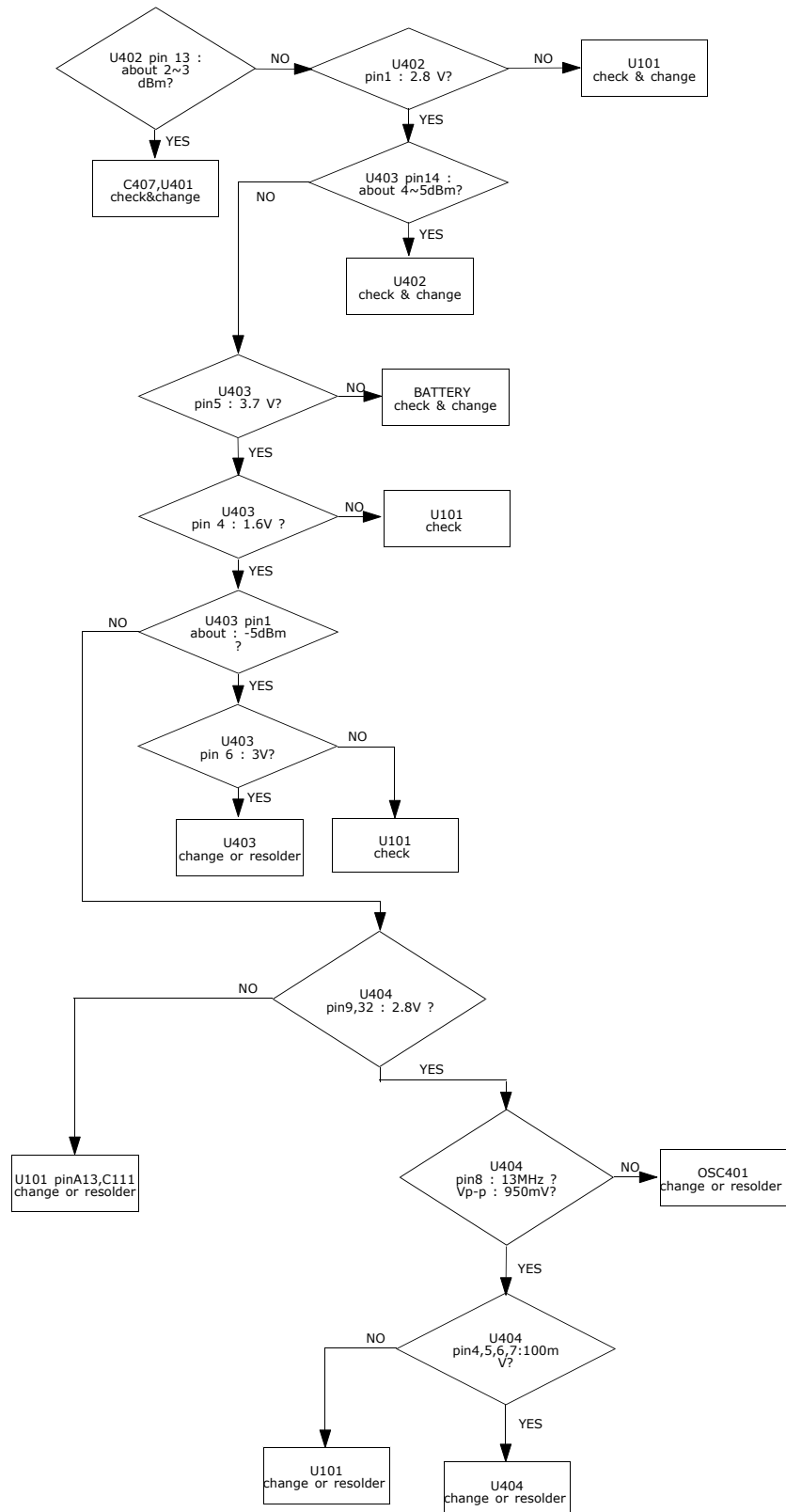


2-2-2. DCS RX

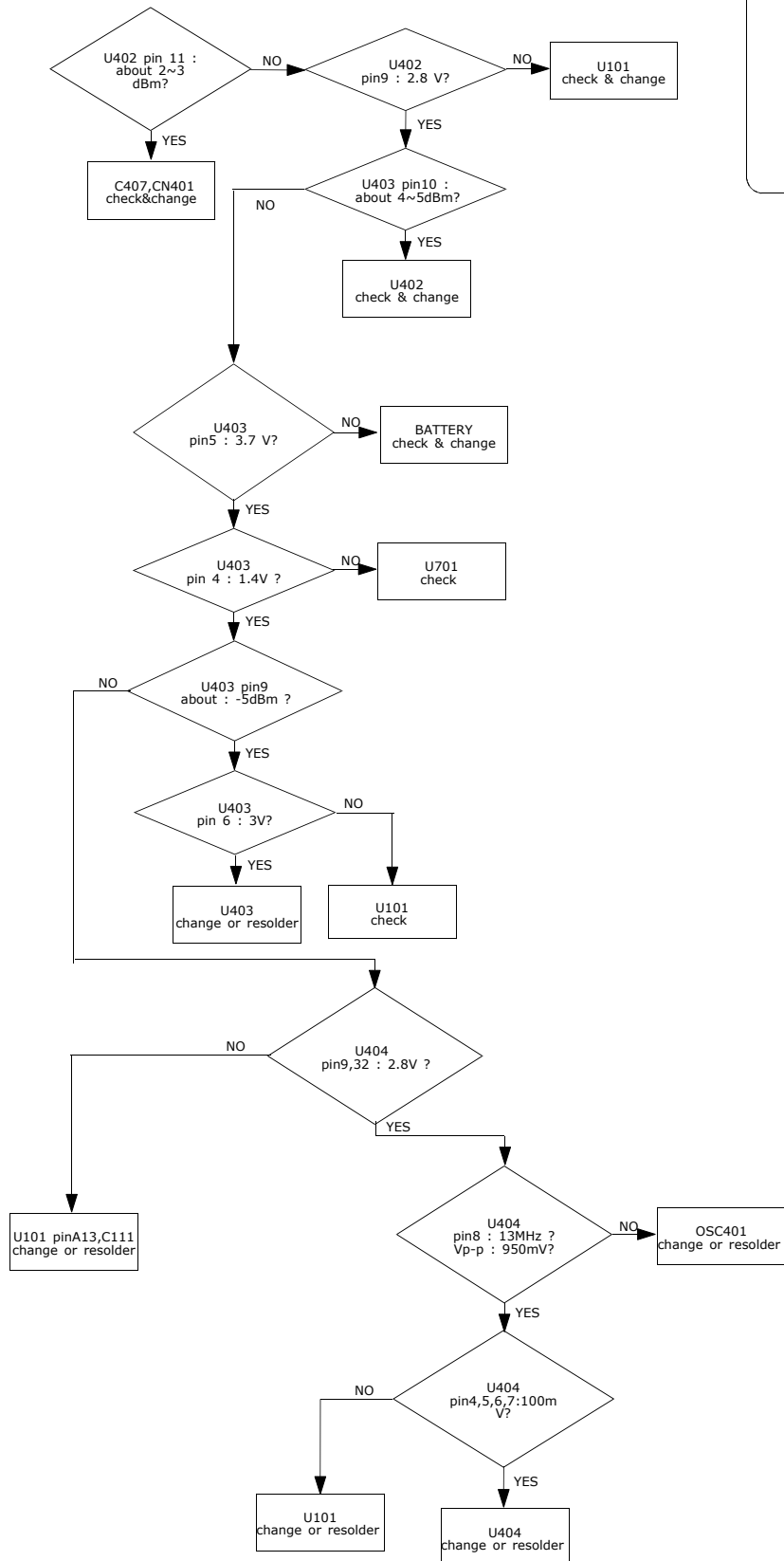
CONTINUOUS RX ON
RF INPUT : 698CH
AMP : -50dBm



2-2-3. EGSM TX



CONTINUOUS TX ON CONDITION
 TX POWER DAC: 600 CODE APPLIED
 CH : 62
 RBW : 100KHz
 VBW : 100KHz
 SPAN : 10MHz
 REF LEV. : 10dBm
 ATT. : 20dB

2-2-4. DCS TX

CONTINUOUS TX ON CONDITION
 CH : 698CH(DCS)
 TX POWER CODE: 520 CODE Applied
 RBW : 100KHz
 VBW : 100KHz
 SPAN : 10MHz
 REF LEV. : 10dBm
 ATT. : 20dB

