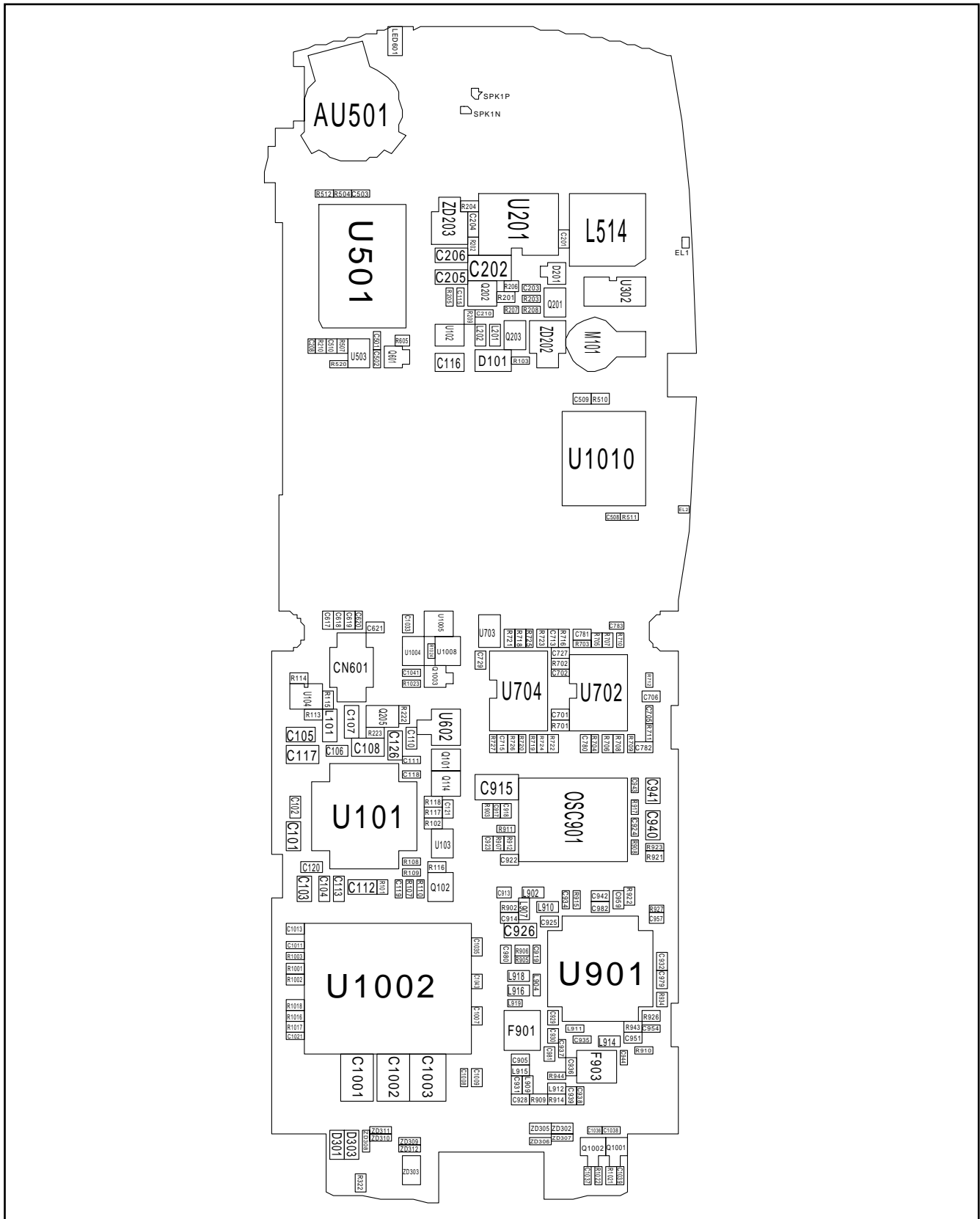
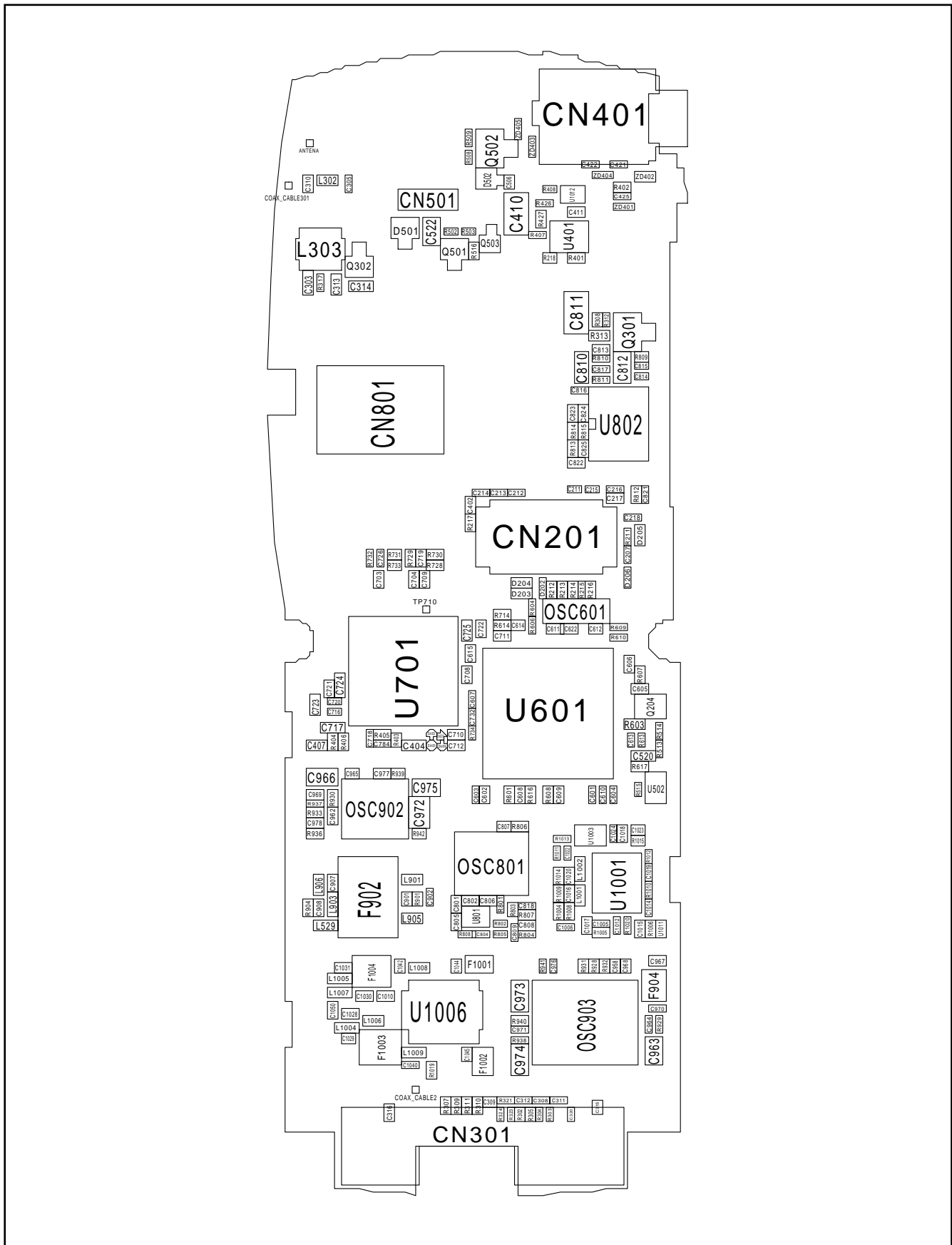


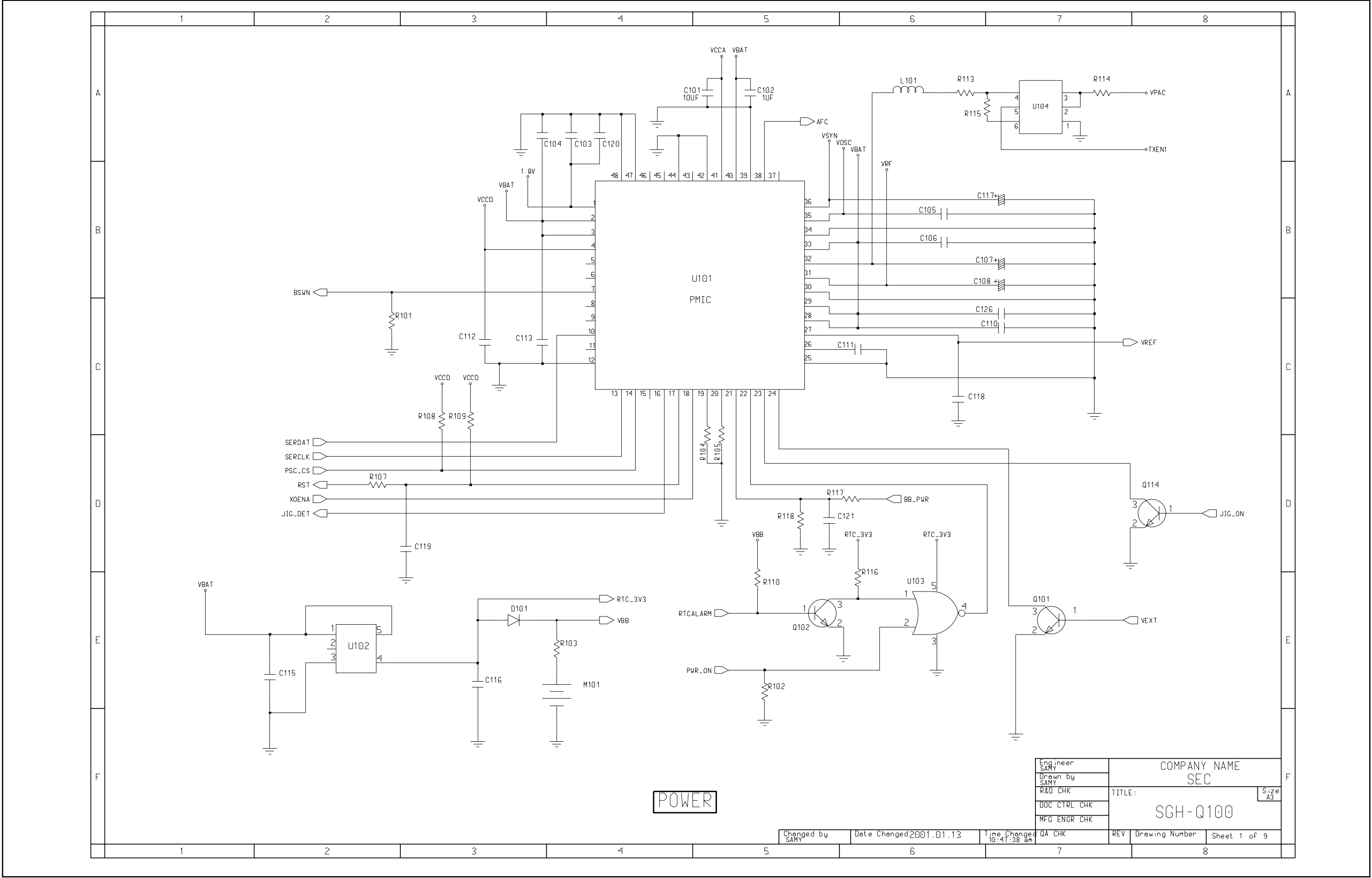
4. SGH-Q100 PCB Diagrams

4-1. Main PCB Top Diagram

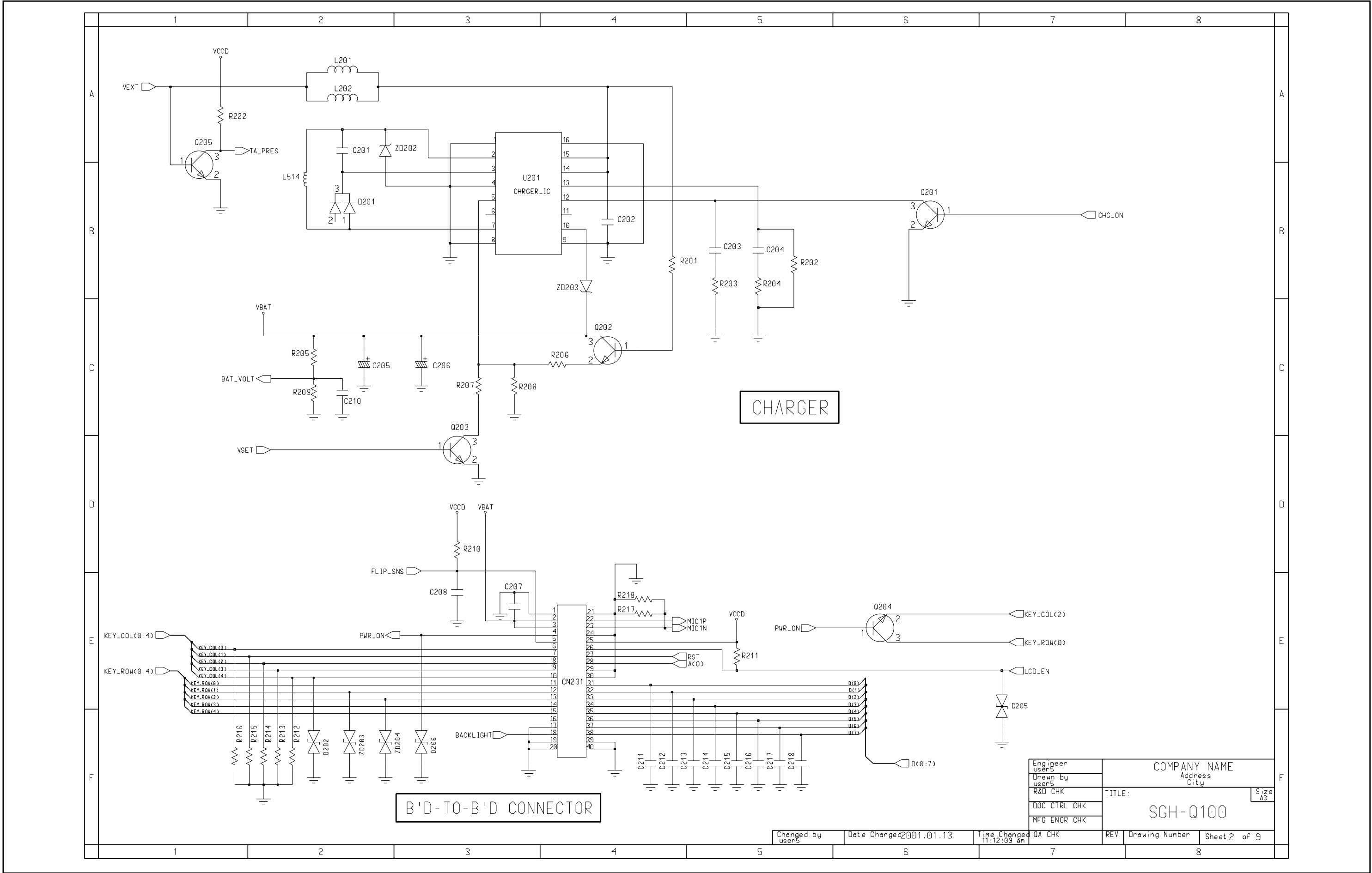




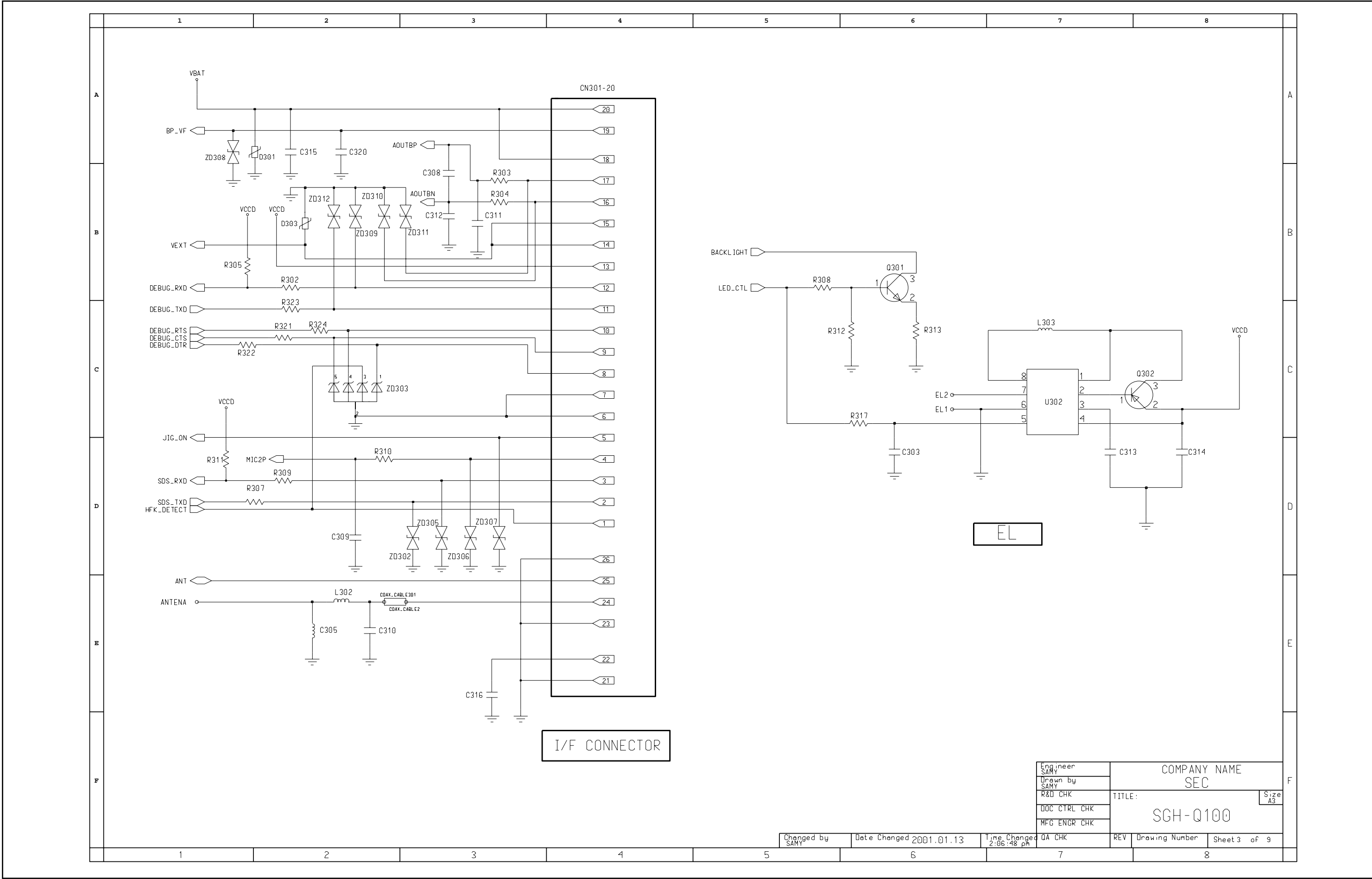
5-15. Power Circuit Diagram



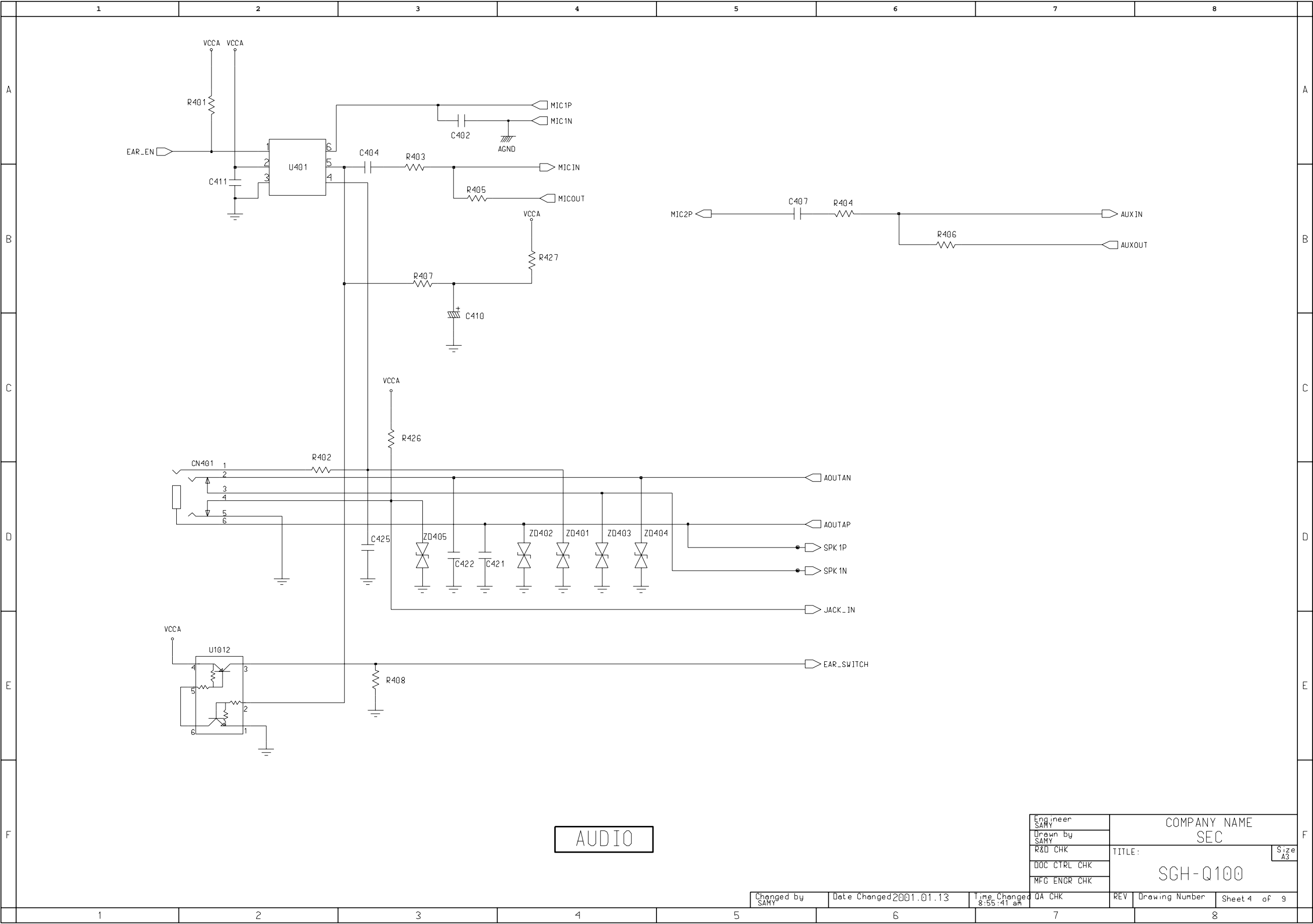
5-16. Charger & B'D-TO-B'D Connector Circuit Diagram

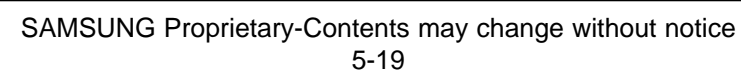


5-17. EL & I/F Connector Circuit Diagram

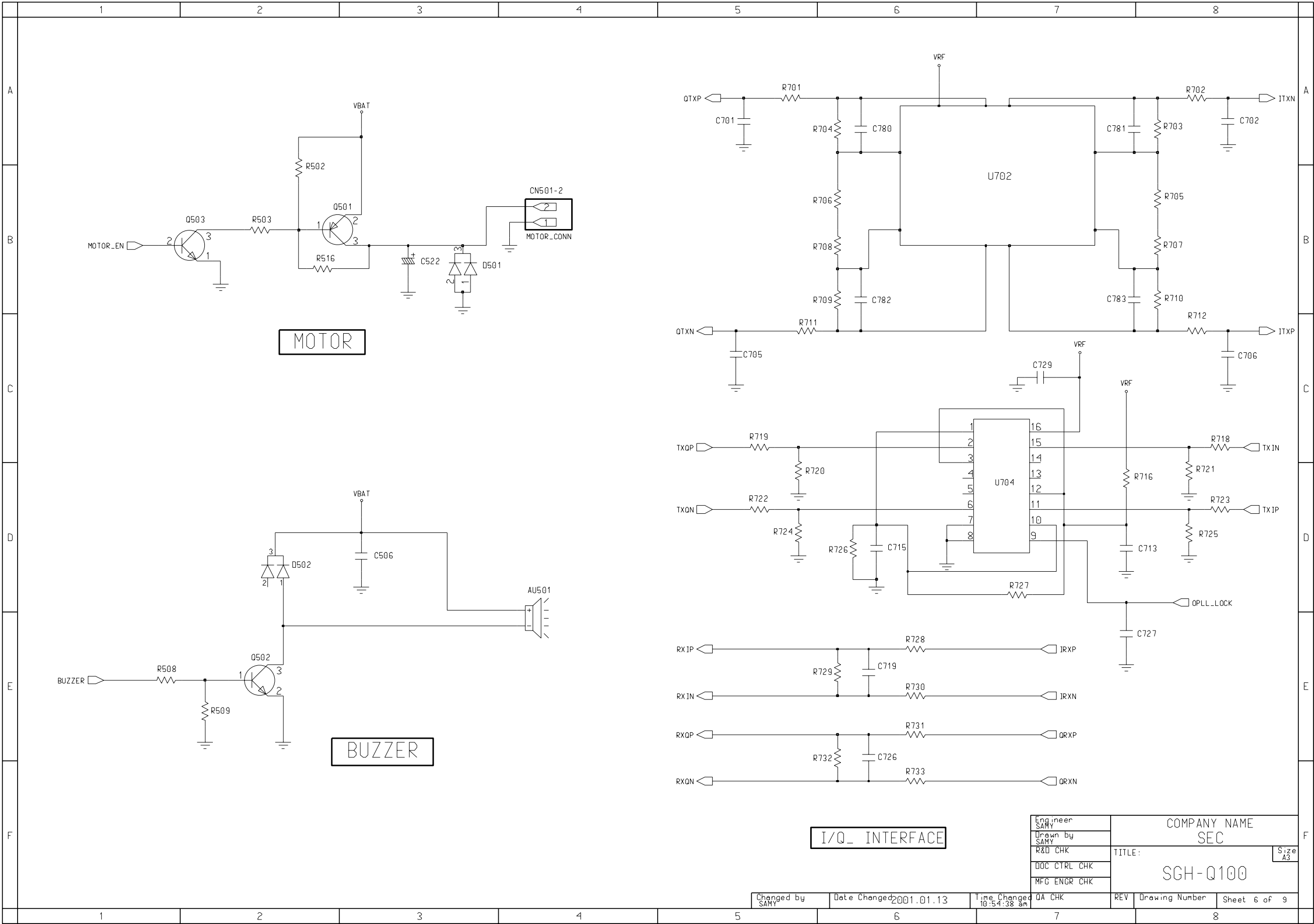


5-18. Audio Circuit Diagram

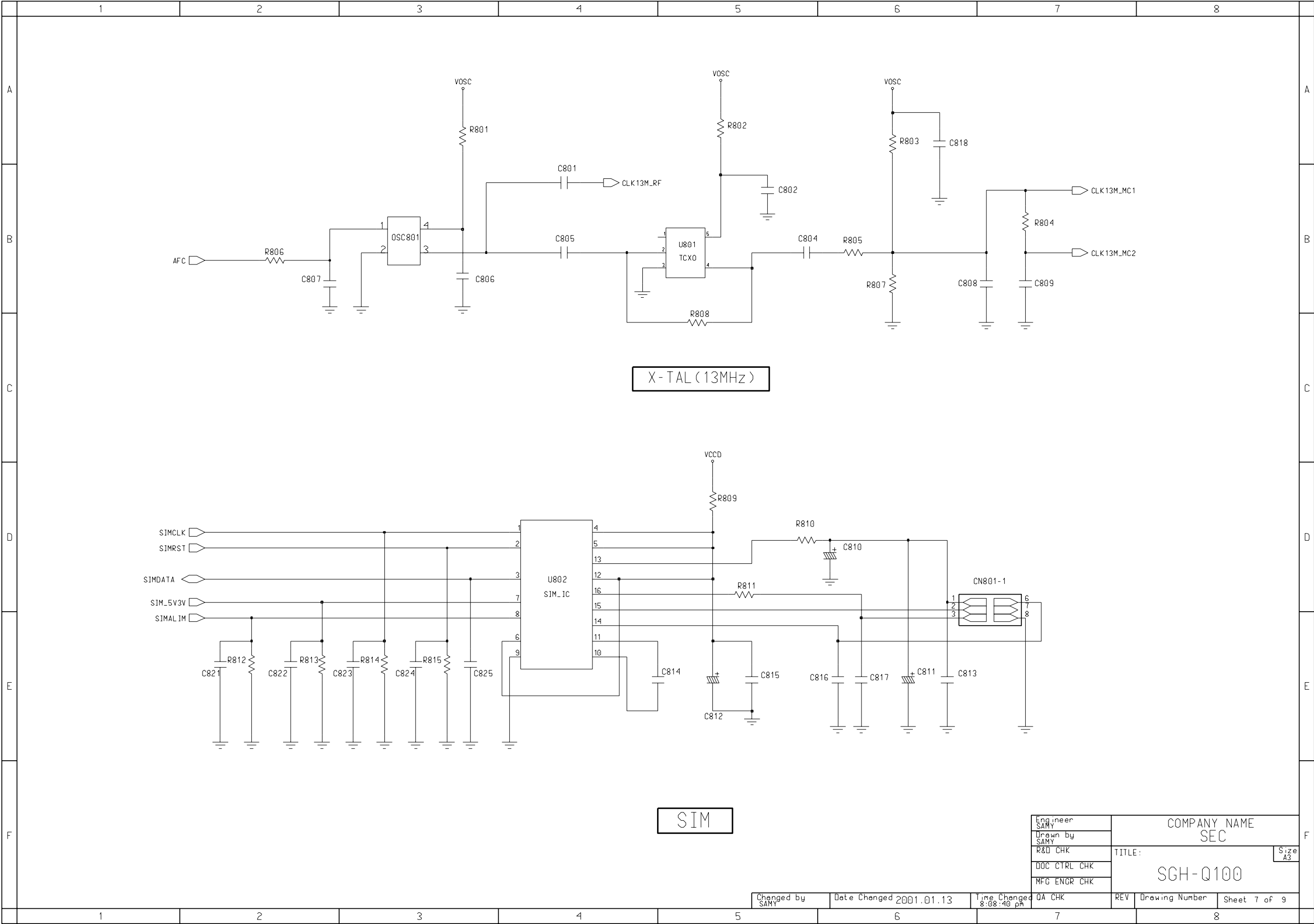




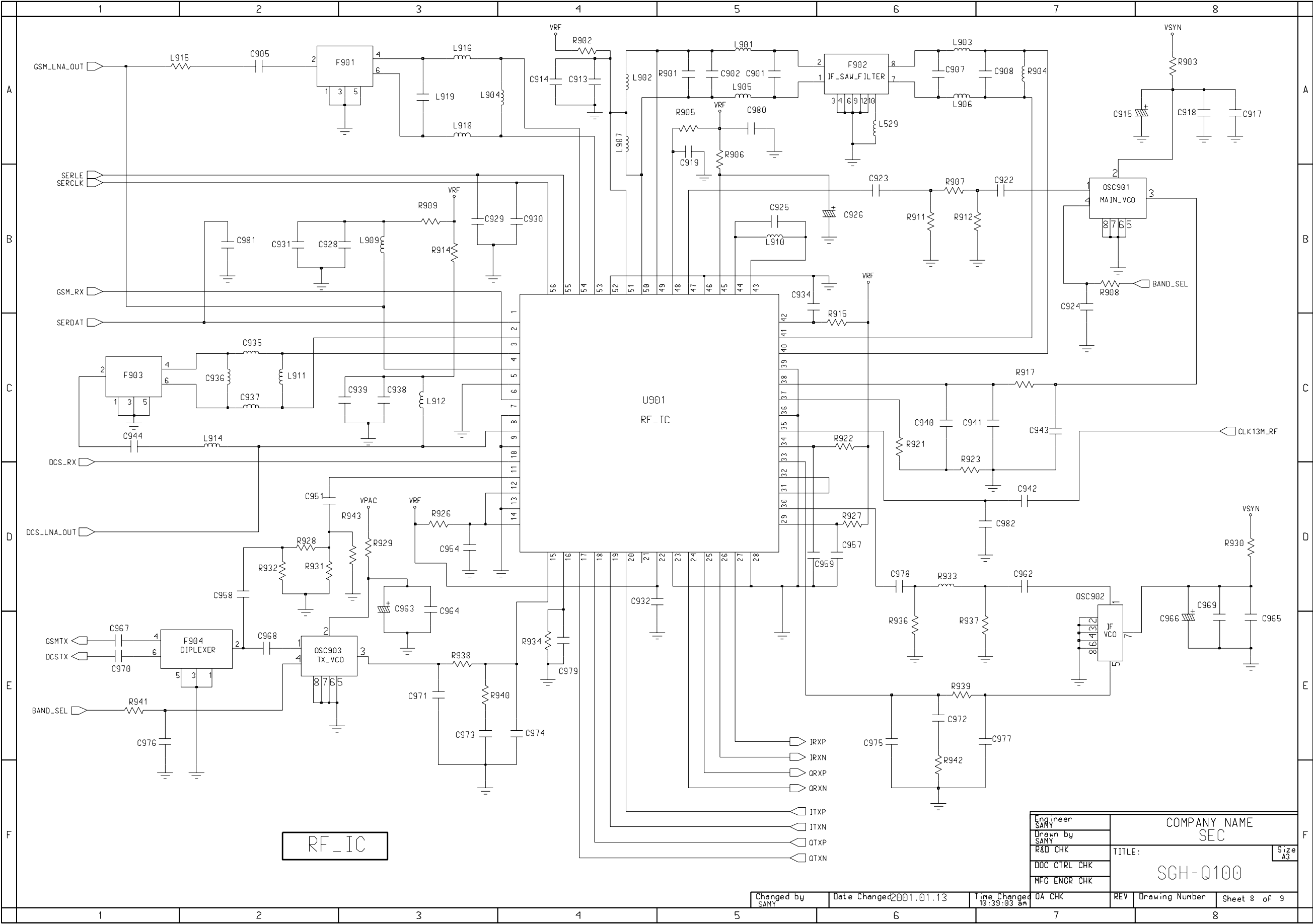
5-20. Motor & Buzzer & I/Q Interface Circuit Diagram



5-21. X-TAL(13 MHz) & SIM Circuit Diagram



5-22. RF_IC Circuit Diagram



5-23. Transmitter & Receiver Circuit Diagram

