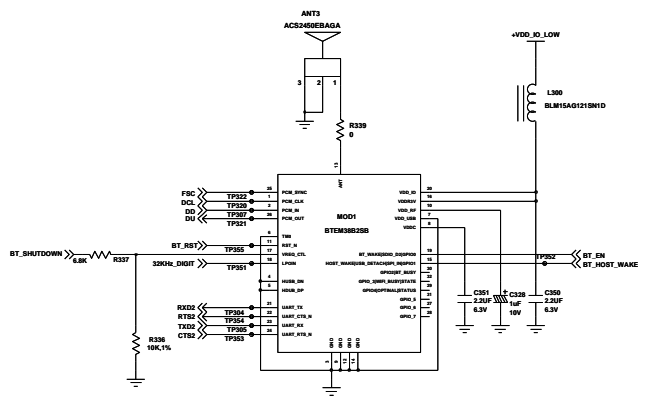


MEMORY
(256M NOR x 1G NAND x 256M UeRAM)



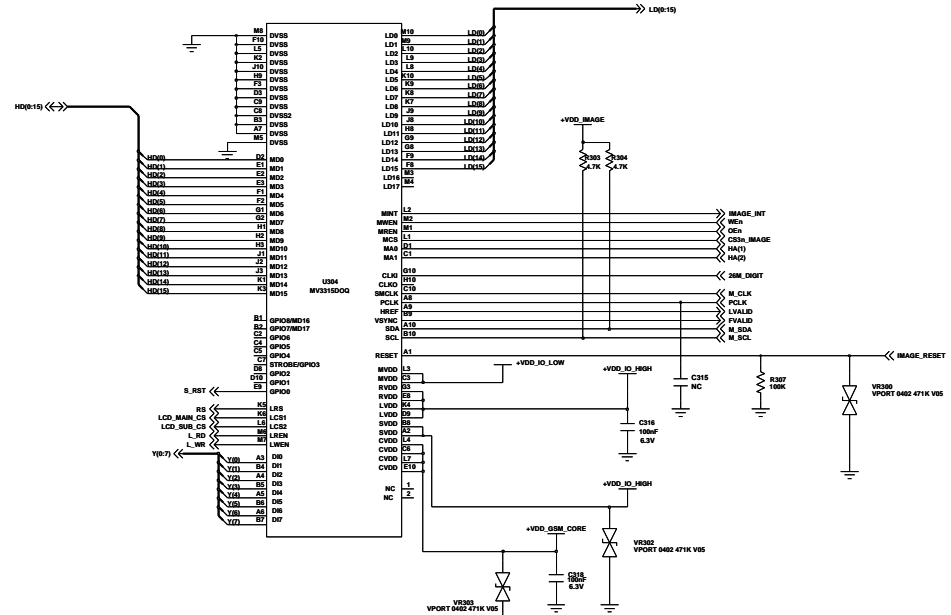
BLUE_TOOTH



LEVEL SHIFT

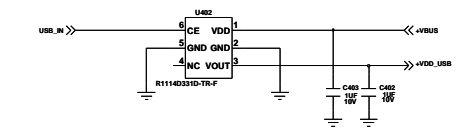


LDO

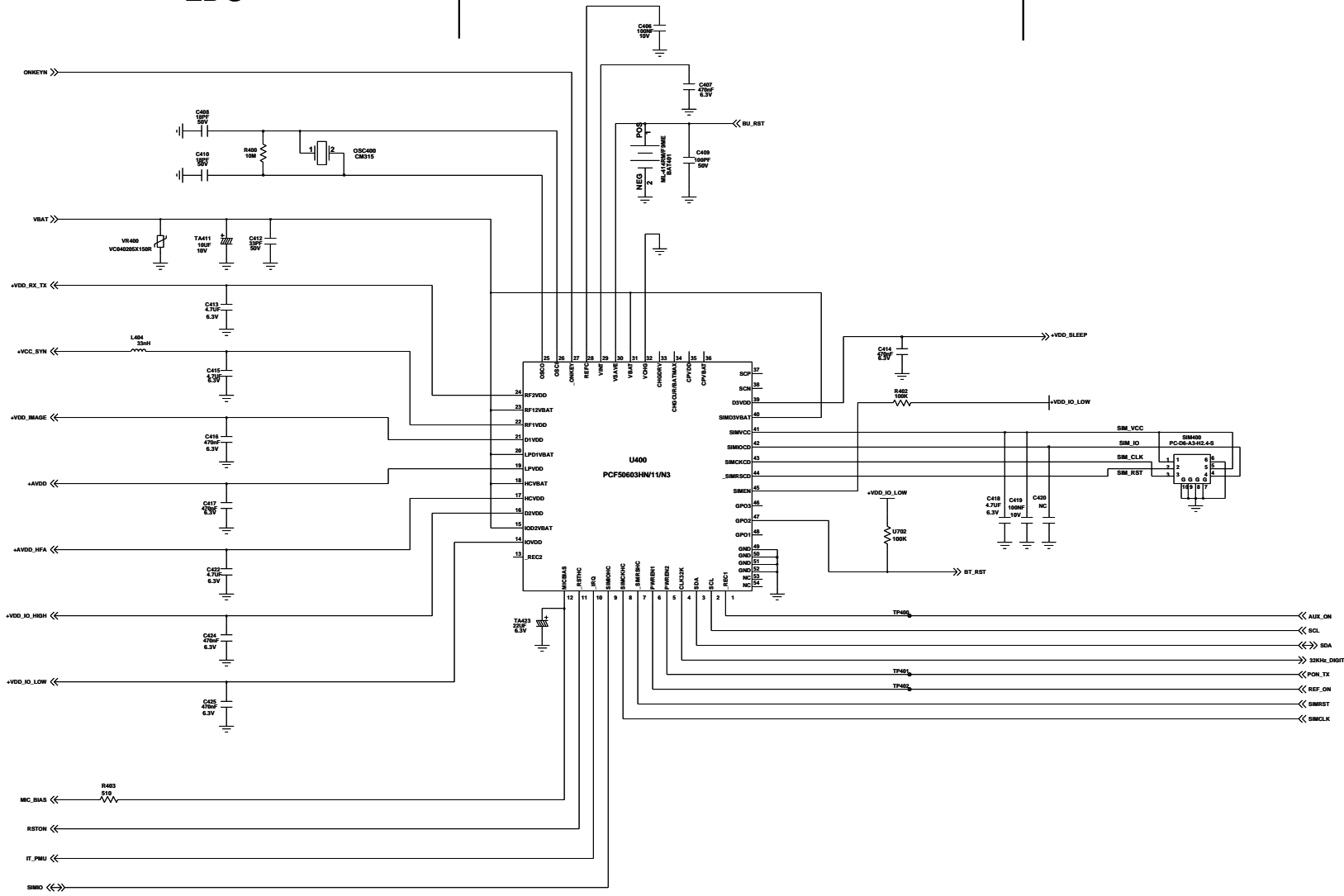
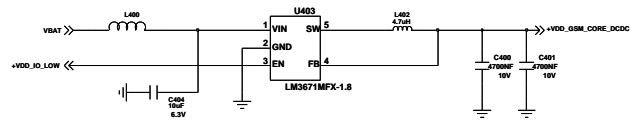


IMAGE_DSP

DC/DC Down Conveter(1.8Volt)



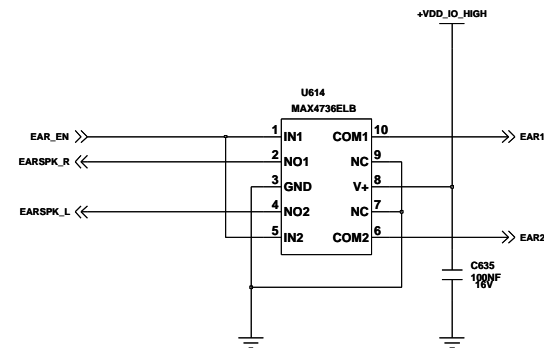
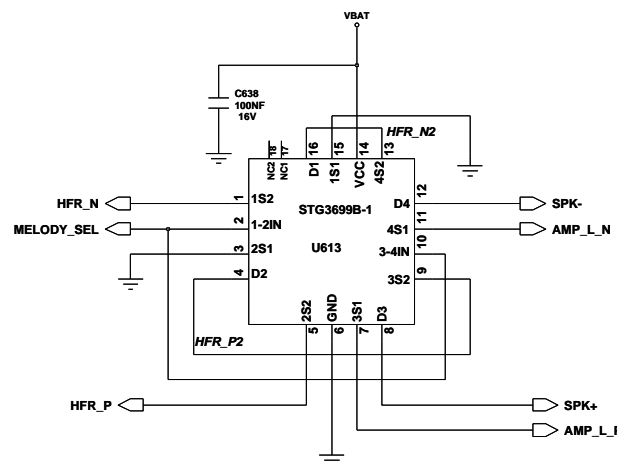
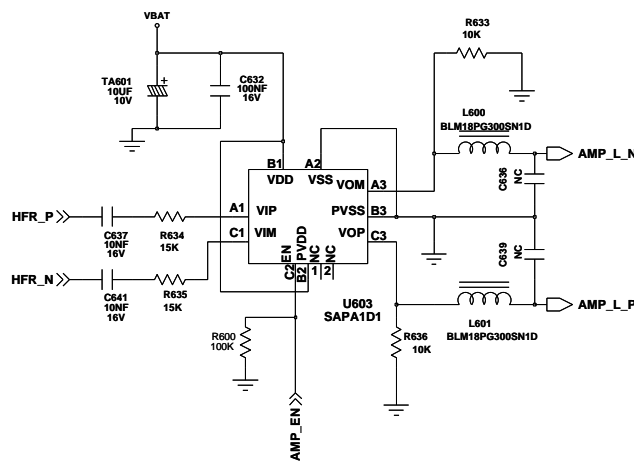
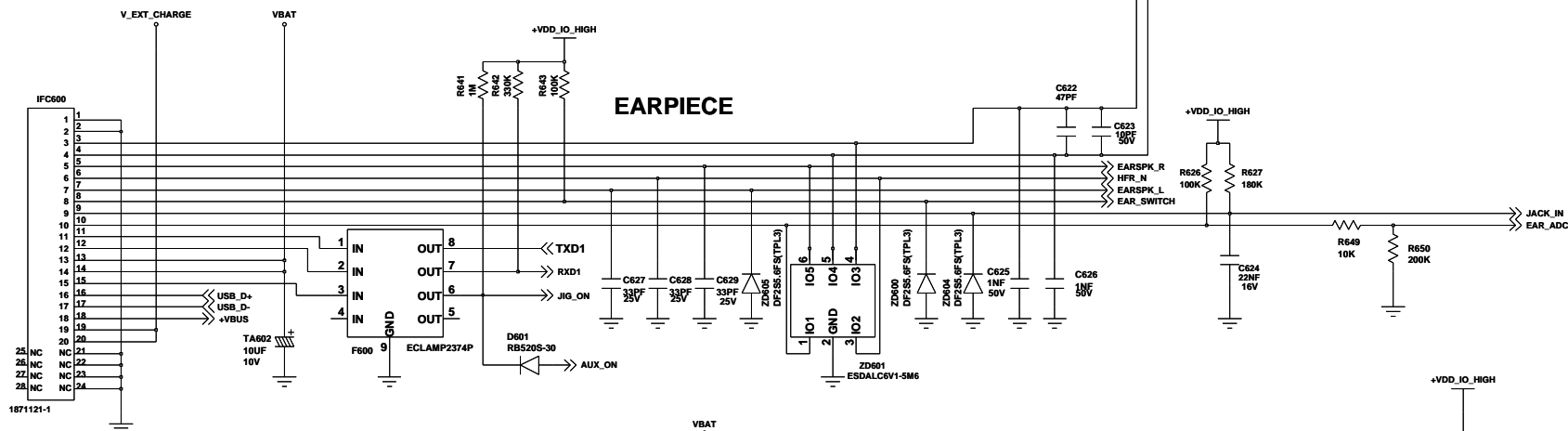
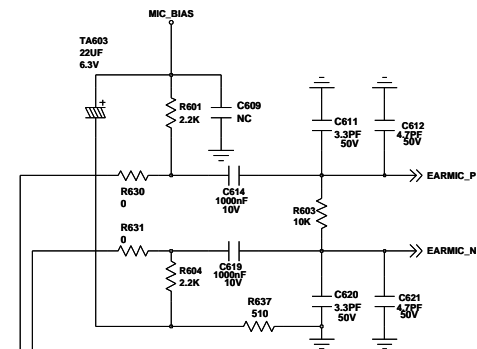
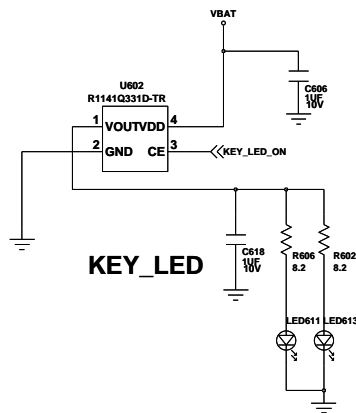
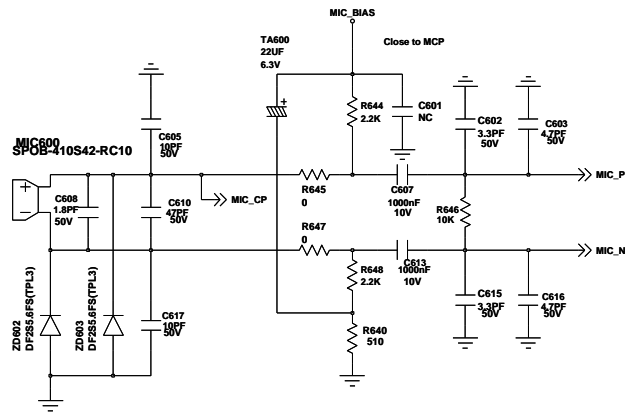
LDO



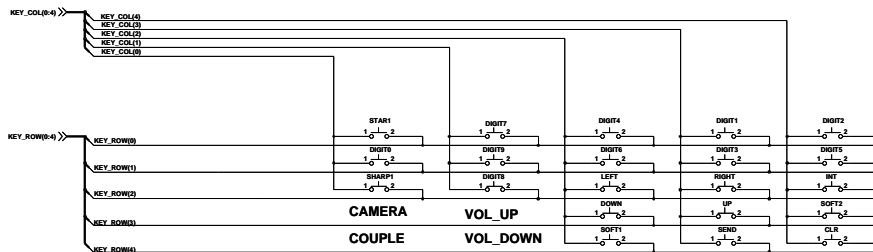
VDD_IO_HIGH	2.9V
VDD_IO_LOW	1.8V
VDD_VIB	2.9V
VDD_IMAGE	2.8V
AVDD	2.8V
AVDD_HFA	2.8V
VDD_RX_TX	2.8V
VCC_SYN	2.8V
VDD_SSM_CORE	1.8V
VDD_SLEEP	2.8V
VDD_VIB_2.9	2.9V
VDD_4V	4V



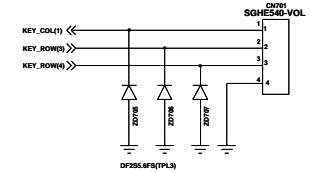
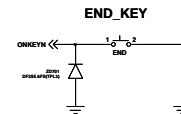
Title			
Charging Schematic			
Size A3	Document Number AMELIE		Rev Rev 0.8
Date:	2006.04.11	Sheet	5 of 7



Title		
Audio & KEY Schematic&IF CONNECTOR		
Document Number	AMELIE	Rev 0.8
Date:	2006.04.11	Sheet 6 of 7

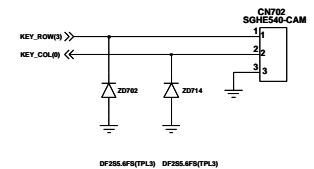
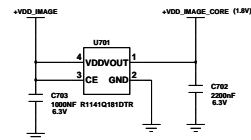


KEY_MAP



SIDE_KEY

LCD_CONNECTOR



CAMERA_KEY

